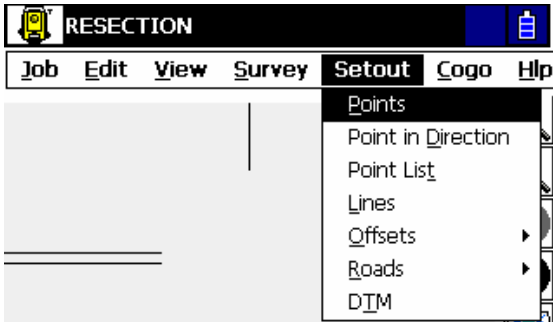
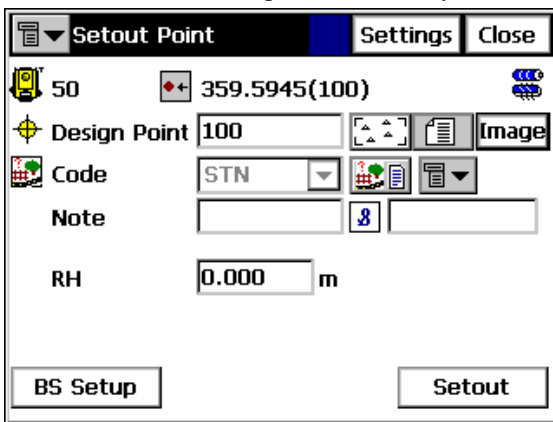


Setting Out

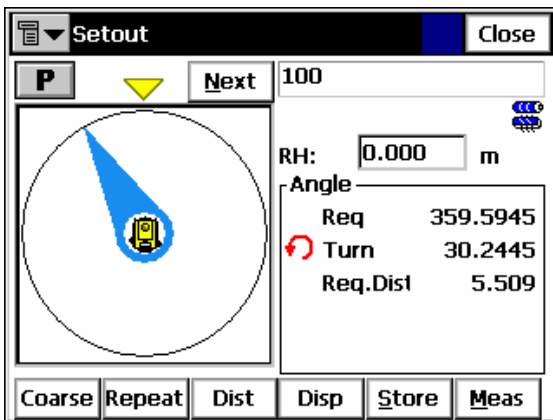
Having created a new job, importing sufficient coordinate data to work from and setting the Backsight, select *Setout / Points* (for this example)...



From the Setout Point dialog, select the point you wish to set out via the list, map or manual entry...



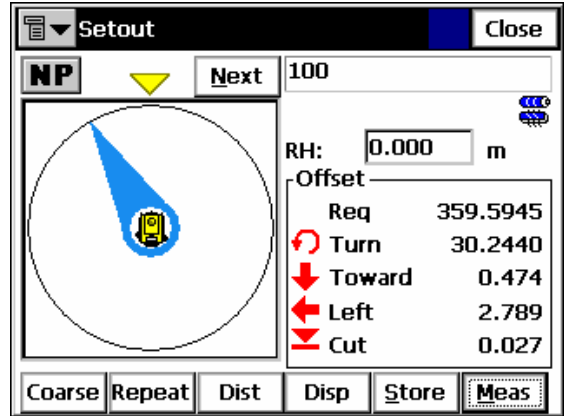
Set the required pole height and press *Setout*:



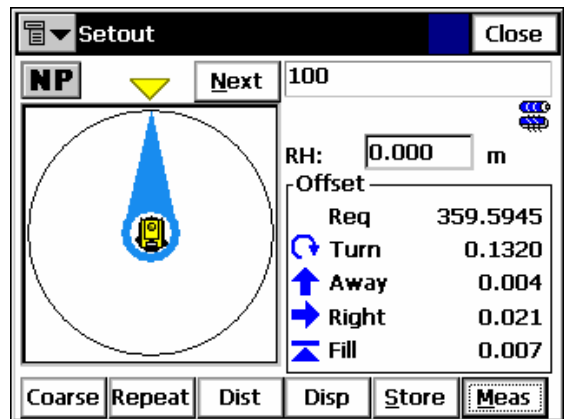
Note the above dialog automatically displays the direction that you need to turn the total station both graphically and as a numeric value.

You can choose various other options, such as whether you wish the EDM to measure in *Coarse* or *Fine* mode, or whether you wish to measure a single distance at a time, or set the EDM to *Repeat* mode (as defined in the instruments setup parameters). Pressing *Dist* will take a distance shot.

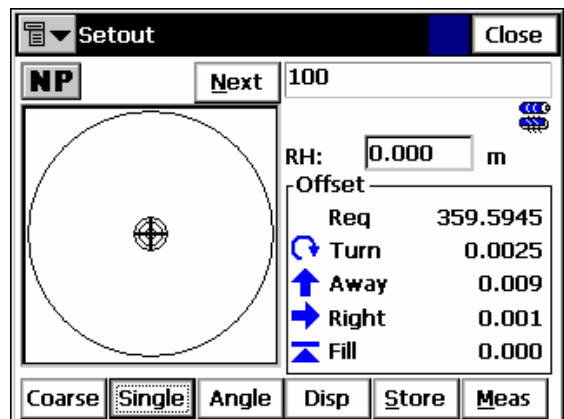
Sight the prism, and select the *Meas* button. Once distance information is available, the display will show how far away the pole needs to be moved, as well as the appropriate *Cut & Fill* values.



Moving the pole according to the information supplied and measuring again will alter the display. Note the use of different icon colours for different movement directions.



Once the pole is within a certain tolerance (defined in the *Setout Parameters*), the display changes to a bull's-eye for fine positioning.



When you are happy, the position can be *Stored* (a dialog will display the coordinates for confirmation. Note the stored point ID is given a suffix *_stk ...* this was defined in *Topsurvs Setout Parameters*) and the dialog will automatically move to the next point.

Note you can manually move to the next point in the list by selecting the *Next* button in the *Setout* dialog.