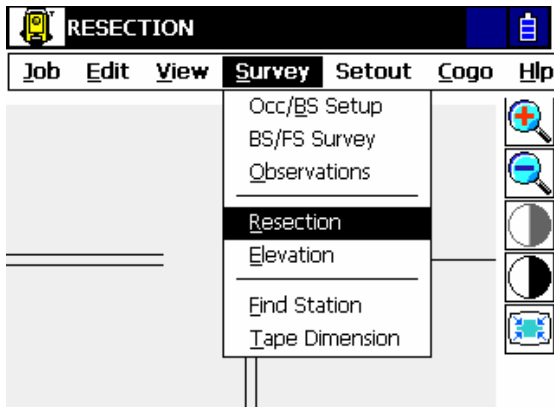
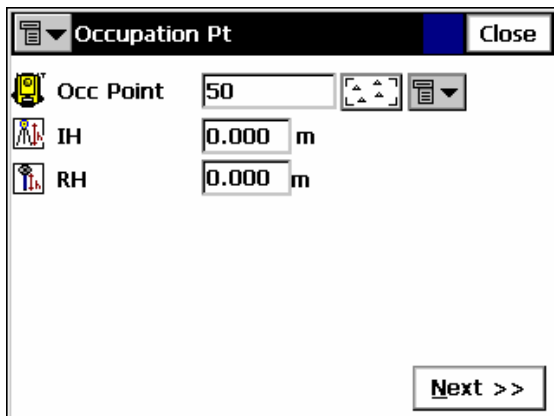


## Control Resection

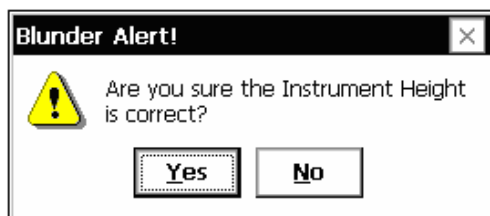
Having created a new job and either measuring or importing sufficient coordinate data to work from, select *Survey / Resection...*



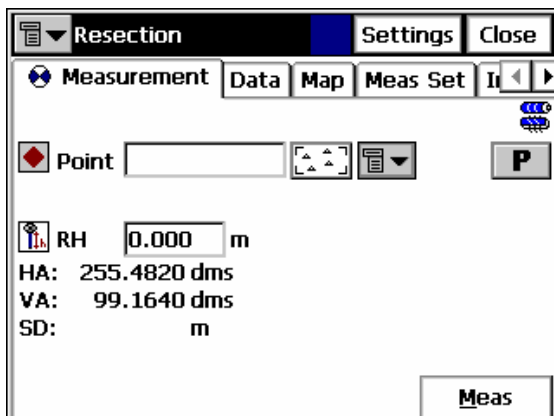
Enter the resected point details in the first dialog...



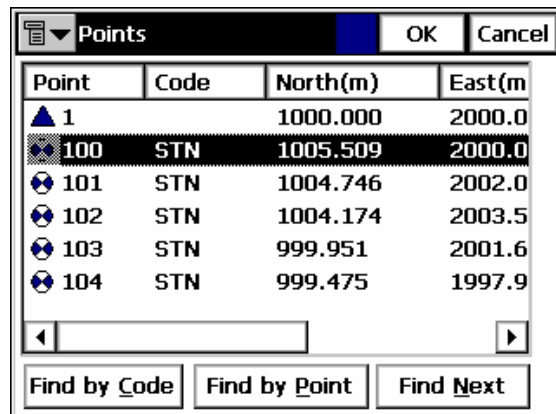
Press *Next*, if you have entered a zero instrument height, you will be asked to confirm this:



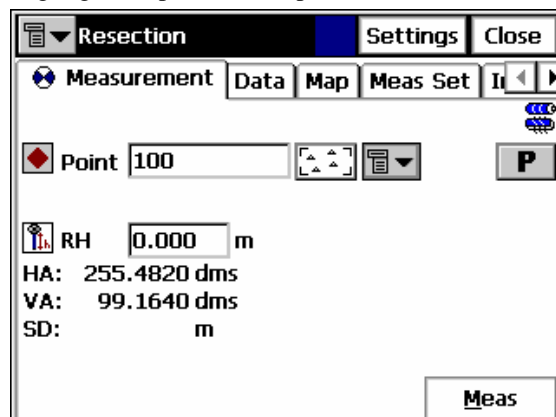
You will now need to select and measure to all of the control points to resect from. Note that although you can resect to two points, it is best to use three or more, with a decent geometry (try to avoid points on a line).



Select the points as usual, i.e. from the points listing...

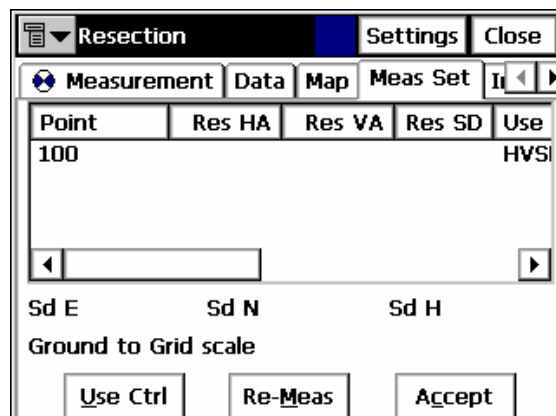


Highlight the position and press *OK*.



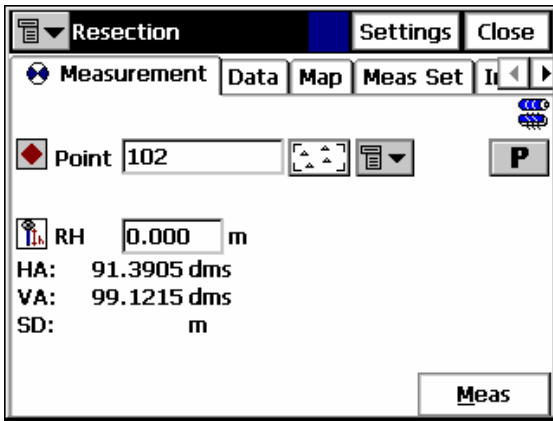
Enter a target height, sight at the control point and press *Measure* and the *Enter* button, or just press the *Enter* button

Note: if there's nothing in the instruments buffer memory, pressing *Enter* will take the measurement and store the point. Otherwise, pressing *Enter* will store the data in the buffer.

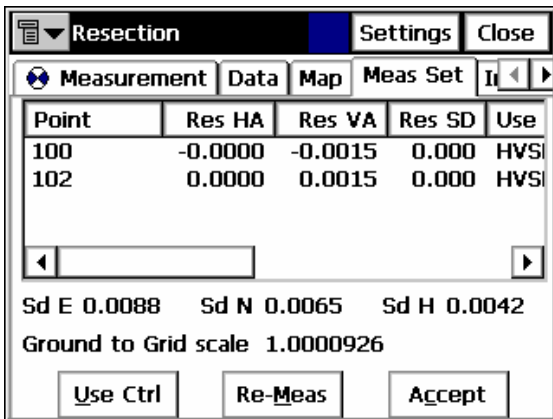


After the first measurement has been taken, click on the *Meas Set* tab to view the current solution results. At this stage, there is no information as not enough measurements have been taken to compute a solution.

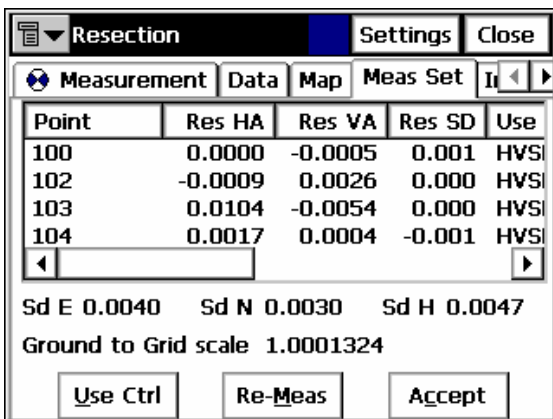
Return to the *Measurement* tab and select the next point to observe to...



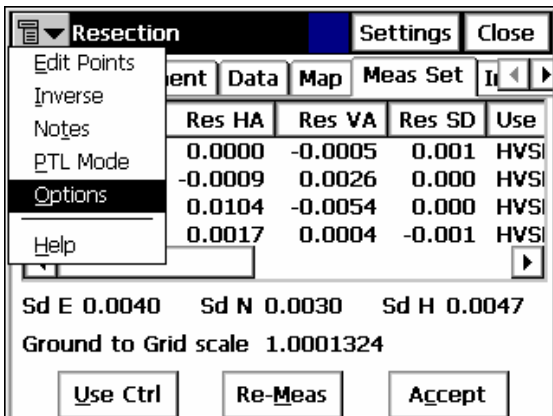
With every measurement that is taken, the Meas Set tab starts to compute and refine the solution:



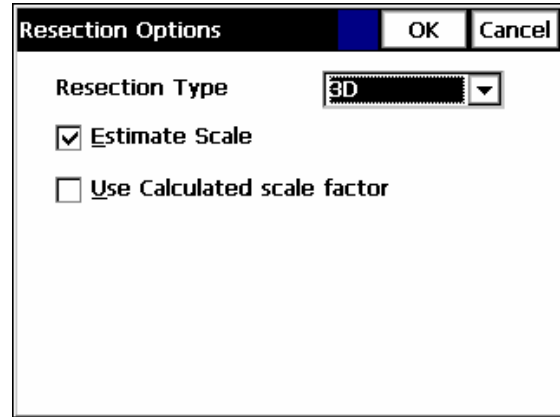
Notice that individual observation residuals are computed and displayed, as well as the standard deviation values of the new resected point...



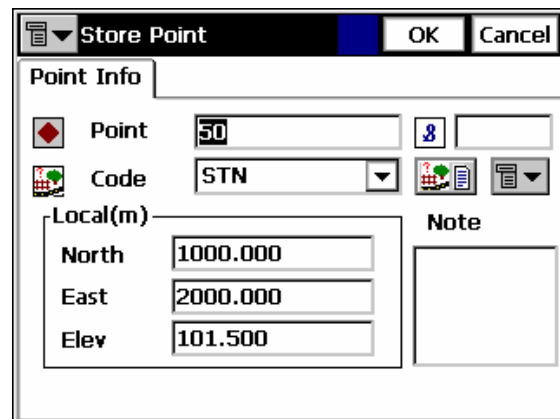
A scale factor is also computed and can be used by going to the Options from the control icon menu...



And ticking the appropriate box.



If you are happy with the computed solution, select *Accept* from the *Meas Set* tab. Confirm the point ID and press *OK* to continue.



Press on *Close* and confirm that you wish to exit from the *Resection* dialog.

