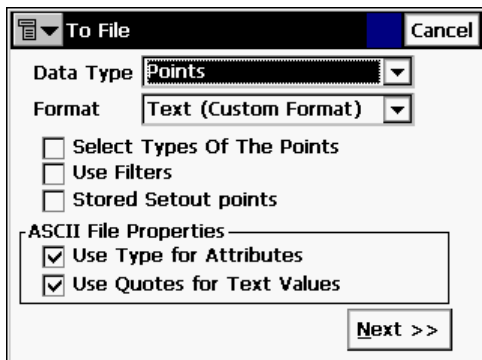


Exporting Survey Data

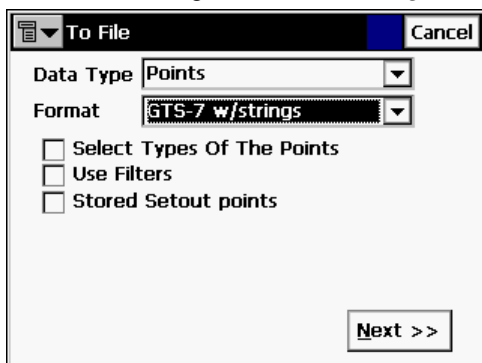
Once a survey has been completed, you can export either *Raw Data* or coordinated *Points* from TopSurv.

From the *Job* menu, select *Export* and then *To File*.

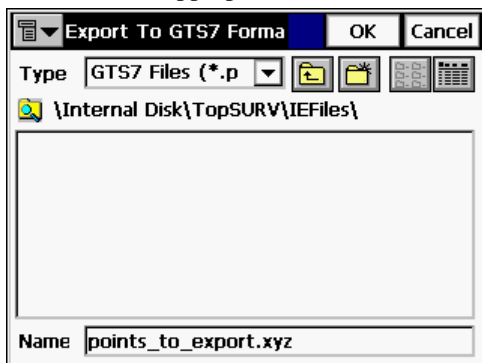
If you wish to export points, from the following dialog:



... leave *Data Type* as *Points* and either leave *Format* as above, or change to *GTS-7 w/strings*:

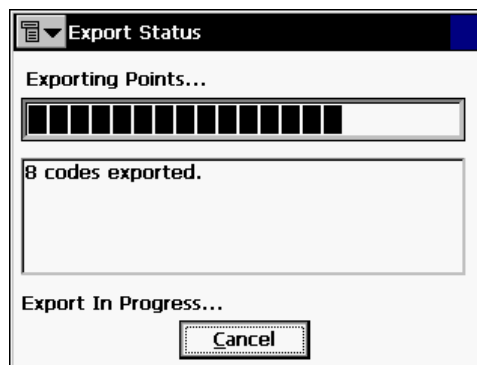


Click on *Next* and from the following screen; enter a filename in an appropriate location:



N.B. When importing or exporting data, TopSurv always initially points to a folder called *IEFiles* off the main TopSurv installation folder.

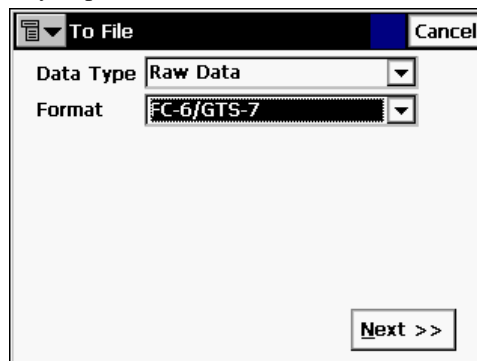
Press *OK* at the top of the screen and the next dialog will inform you of the status of the current export:



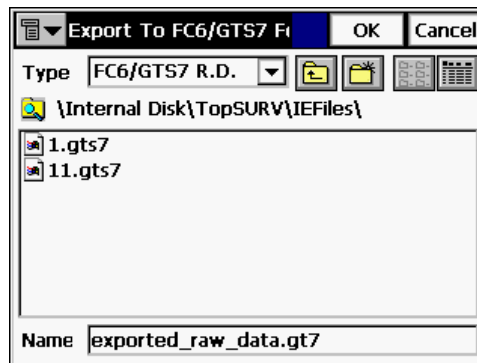
Having successfully exported your points, click on *Close* to be returned to the main screen.



If you wish to export *Raw Data*, from the initial dialog select this as you *Data Type* and choose *FC-6 / GTS-7* as you preferred format:



... and enter an appropriate file name.



A similar export progress dialog will be displayed and you will be informed once the export has completed successfully.