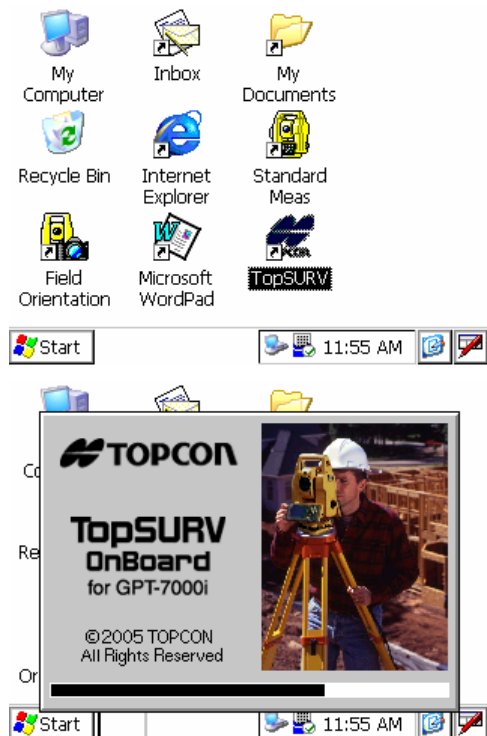
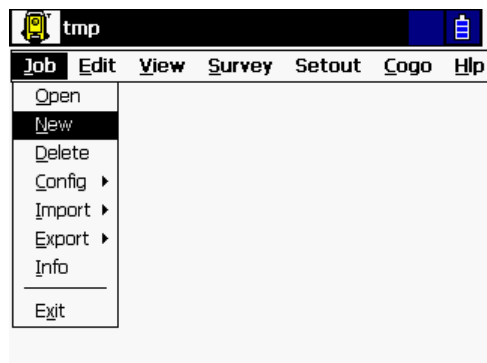


## Setting up and configuring a new Job

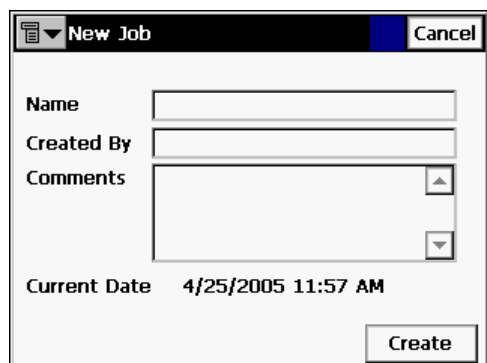
From the Windows CE Desktop, start TopSurv



From the Job menu, select New



and enter appropriate job name and details



select *New* and enter appropriate name and details ...

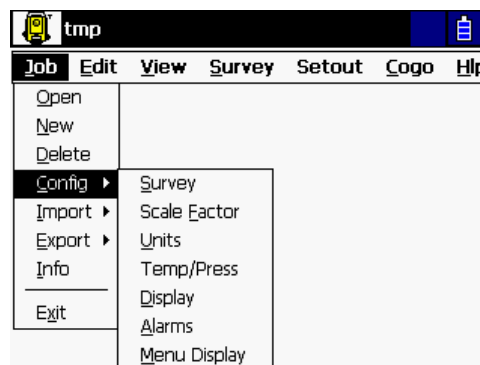
Press *Create* to be taken back to the main screen again.

N.B. when using the GPT-7000i, one of the available options is to have the *Camera View* enabled by default.

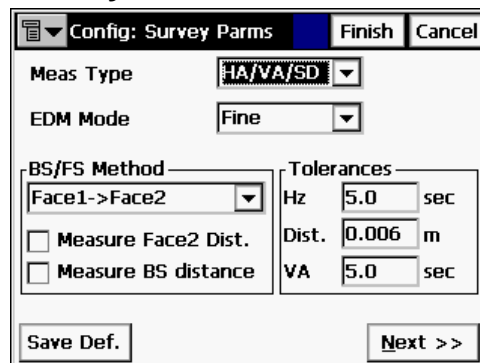
To do this, from the *View* menu, ensure that a tick is placed next to *Enable*.

## Configuring the Job

If you wish to check the current configuration settings, from the **Job** menu, select each of the options in turn.

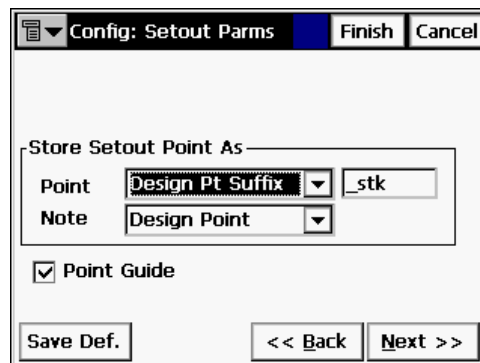


## Survey

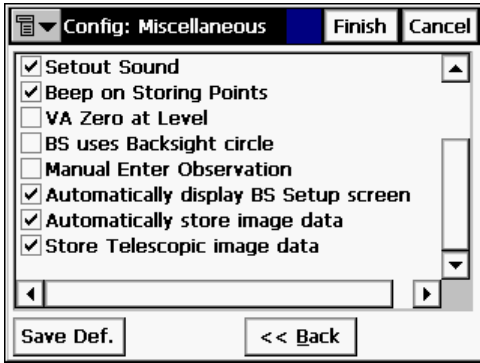


The first screen is where you can set the standard parameters that will be used during the survey, including acceptable angle and distance standard deviations and what mode will be used for control observation measurements (BS/FS Method).

You can also choose which measurement mode you wish to use, as well as whether the *EDM mode* should be Fine or Coarse.



Following this is the *Stakeout* screen where you can control how design points can be set out

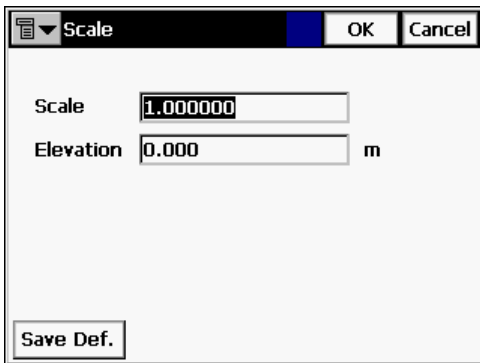


The final screen allows you to set various miscellaneous options as shown above. When using the 7000i option, the user will need to decide whether images captures at each observation should be recorded. If so, make sure that the final two options in this screen are ticked.

N.B. at any time, you can click on the *Save Def.* button to save the currents settings as default.

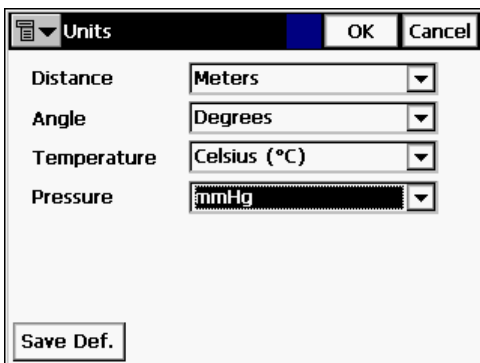
Click on Finish to leave this screen.

### Scale Factor



For most occasions, the above settings are fine.

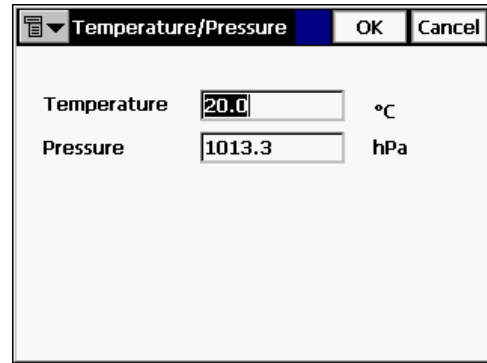
### Units



Note that these options are not dependent on the configuration that can be setup in the instruments Standard Measurement mode.

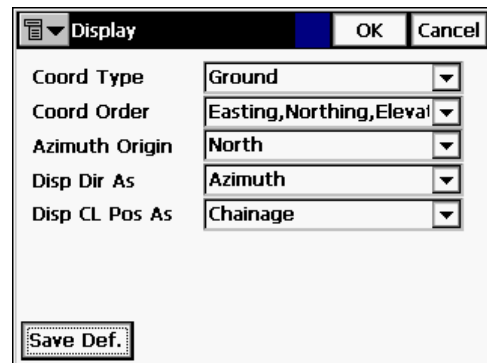
The above settings should be chosen.

### Temperature / Pressure

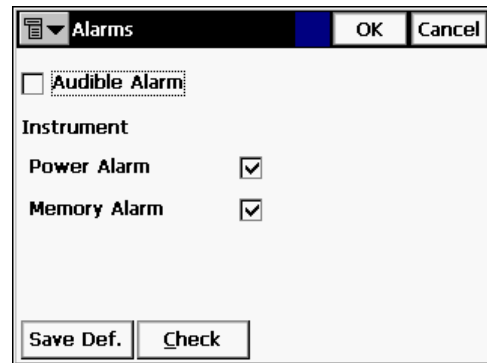


For most environments, the above will be fine, change as required.

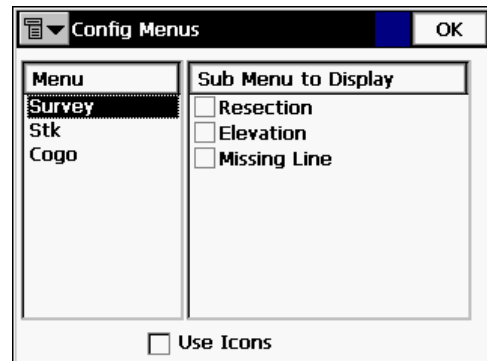
### Display



### Alarms



### Menu Display



If certain items are not used, the corresponding menu item can be disabled from here.